

Sunday Homes

Sunday, July 31, 2005

The Dallas Morning News

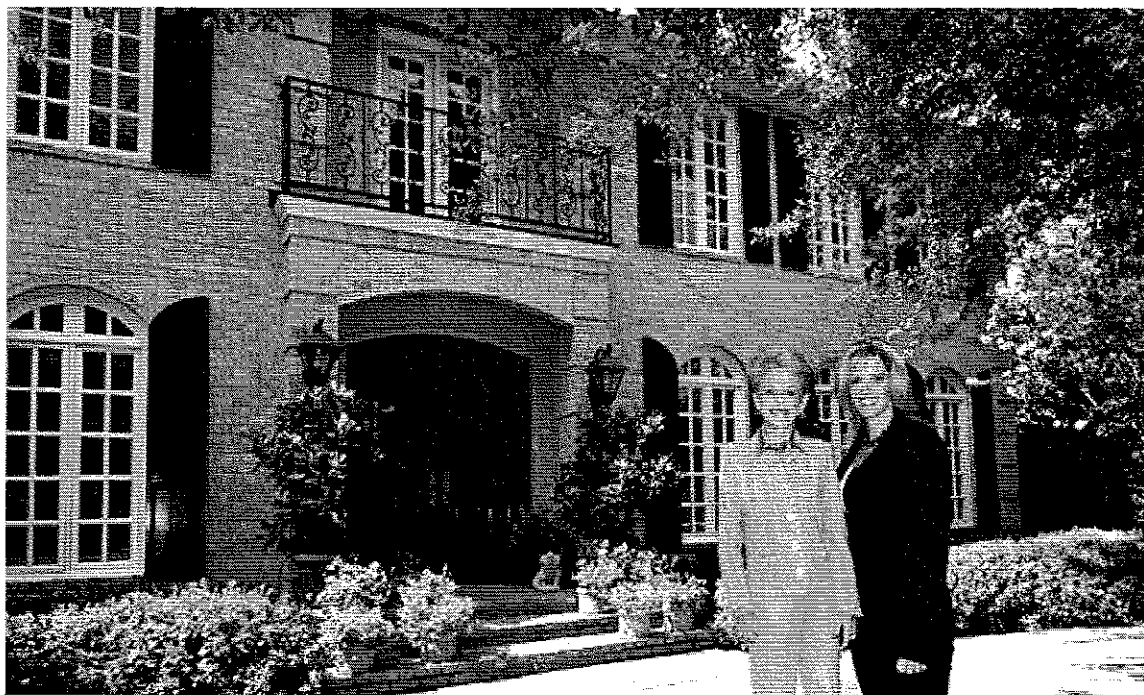
••• Section L

Ellen Terry, Wendy Tippett showcase home situated on large Highland Park corner lot

Ellen Terry, a top-producing agent with Ellen Terry Realtors, and Wendy Tippett, an agent newly affiliated with the company, are offering the home at 3501 Princeton Avenue for \$1,995,000. Situated on a large corner lot at Auburndale and Princeton Avenue in Highland Park, the residence is in a prime location, just minutes from shopping, parks, restaurants and Armstrong Elementary School.

A well-maintained garden blooms year-round, providing a backdrop for entertaining at small gatherings or large parties of 100 guests. An outdoor seating area, complete with a tiled loggia, mounted televisions and oversized furniture, overlooks a pool and tropical palm trees.

The interior was created by international designer Anne Downey and paint finishes were produced by New York artisans. Formal areas, including a dining room fashioned



The home at 3501 Princeton Ave. is being marketed by Ellen Terry and Wendy Tippett of Ellen Terry Realtors for \$1,995,000.

after a villa in Paris, provide ideal areas for seated dinners. Downstairs are also a formal living room, a den and a powder bath.

The residence has three upstairs bedrooms and three full baths, including a master bedroom with an abundance of built-in shelving, a sitting area and a spacious bath with a separate tub and shower.

In addition to the main house, the property also includes a large guest quarters above the garage. A tropical island-themed bedroom and bath plus a kitchenette provide ideal quarters for overnight guests. There is also a triple garage, of which one bay has been converted to an exercise room.

For more information or a private showing of 3501 Princeton Avenue, contact Ms. Terry at 972-380-7702 or Ms. Tippett at 972-381-6852. A virtual tour of the property can be viewed at www.ellenterry.com.